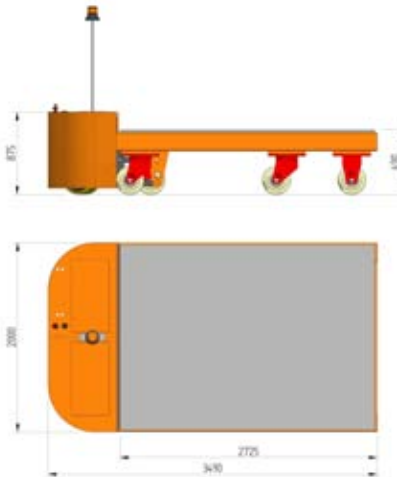
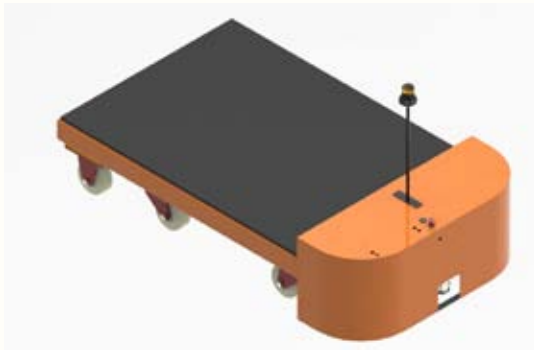


TBC30 - Tractive Burden Carrier



Wheels and Tyres

Drive Wheel: Polyurethane
 Castor: Nylon or Polyurethane

Construction

Mild steel, Tractive Power orange / black powder coat

Safety

E-stop, Battery Isolator, Electro-magnetic brake
 Fail to safe

Power

Gearbox	1 x Planetary
Motor Power	48V 6000W
Controller	400A AC Control Dual Drive

Batteries and charging

Battery Capacity	320A/h
Charger Type	Floor Mount
Output	40Amp
Input	240V
Recharge time:	8hrs

Towing

Towing Capacity	30 tonnes
Max. Weight Transfer	5000Kg
Draw Bar Pull	15000N

Driving

Max. Speed	6Kph
Min. Turning Circle	7m
Steering	Manual



Research shows that operations which exceed the guideline figures for manually pushing/pulling of 20kgs for men and 16kgs for women by more than a factor of two may represent a serious risk of injury.