

ANTOLINI

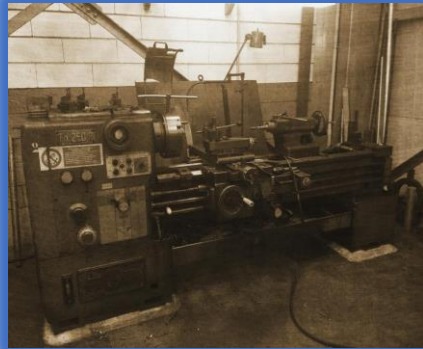
MEZZI CINGOLATI



PRODUCTION-COMMERCIAL HEADQUARTERS AND TECHNICAL OFFICE:
Via Volta No. 24
37026 Settimo di Pescantina (VR)
Tel: (+39) 0456750126
E-mail: info@mezzicingolati.com

OUR STORY

1990-1999 COMPANY FOUNDATION



Antolini tracked vehicles was established in Sant'Anna d'Alfaedo by Giuseppe Antolini, a specialist in lathe-working who expanded into the metalworking sector. His brothers, Mario, Iuri and Luca, joined him in launching partnerships with prominent companies, which led to the foundation of their company.

2000-2013 DIVISION AND EXPANSION



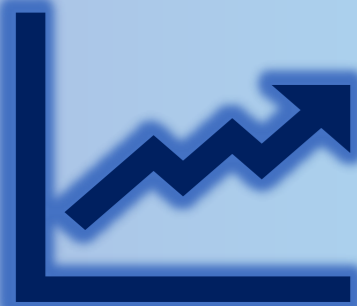
The company was split between four departments: machine tools, welding, carpentry and sheet metal cutting and bending. The purchase of state-of-the-art machines and the ingenuity of design led the Antolinis to transfer part of the Sant'Anna production facility to the new, second base in Settimo di Pescantina where, after recruiting specialized personnel, the inimitable Antolini range began.

2013-2014 TRACKED AND CUSTOM VEHICLES



Antolini tracked vehicles are suitable for working on any type of terrain and born to satisfy different sectors: from construction to agriculture to automotive. Manufactured as standard vehicles, they can be fully customized thanks to the internal management of all phases: from product design to final testing.

2014-2021 CONTINUOUS GROWTH



Today the company is at the forefront of the market, with three offices and more than one hundred specialist employees to meet all customer needs. Every year the company's objectives increase, and with them the company itself grows through continuous research and development of new technologies.

CONTACT US



REGISTERED AND ADMINISTRATIVE OFFICE
Via Cortine No. 1,
Giare, 37020
Sant 'Anna D'Alfaedo (VR)
Tel: (+39) 0457545290

PRODUCTION HEADQUARTERS AND TECHNICAL OFFICE
Via Alessandro Volta No. 24,
37026
Settimo di Pescantina (VR)
Tel: (+39) 0456750126



E-mail
info@mezzicingolati.com



Website
www.mezzicingolati.com

SERVICES



- Mechanical machining
- Construction of tracked vehicles
- Creation of custom vehicles

EXPOS AND EXPANSION IN FOREIGN MARKETS



Since 2014, the company has participated in national and international expos and in recent years has expanded its sales areas into EU and non-EU markets.

UNI EN ISO 9001 Certification



BUREAU
VERITAS

In 2015, Antolini tracked vehicles submitted its business process management system for assessment, obtaining UNI EN ISO 9001 certification and guaranteeing its customers only quality services and products.

VEHICLE HANDLERS

CARTRACT 4R (4 wheel lift)



Track 1800mm
Max. width 3000mm
(of the transported
vehicle)

Max. load 2500Kg
Electric traction
Electromagnetic brake

CARTRACT 2R (2-wheel lift)

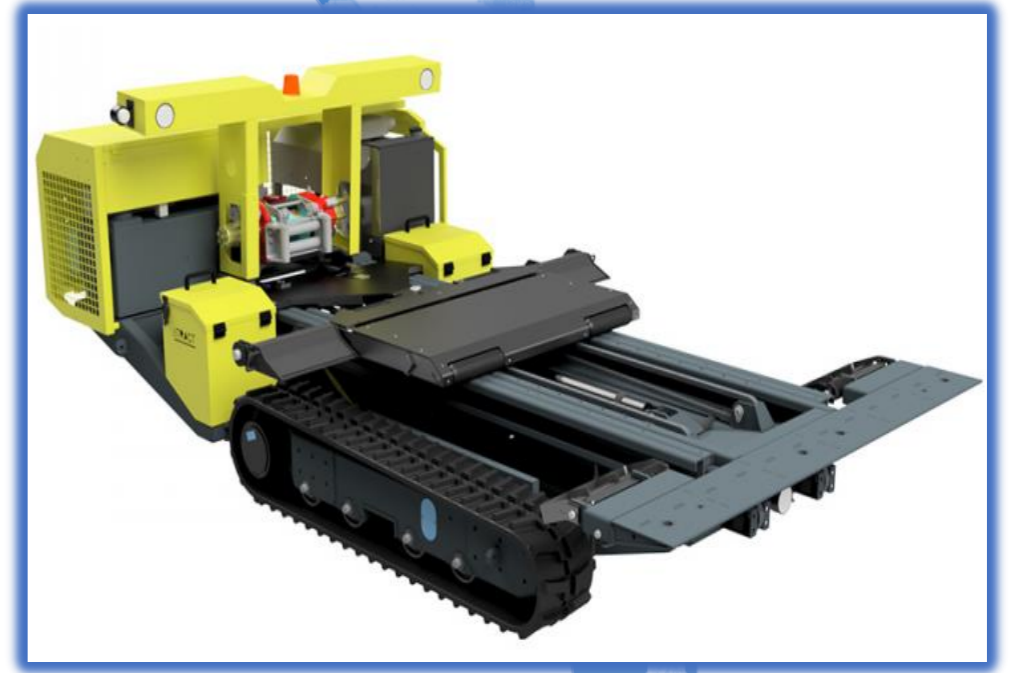


Track 1800mm
(of the transported
vehicle)

Max. load 2500Kg
Electric traction
Electromagnetic brake

TRACKED TOW TRUCK

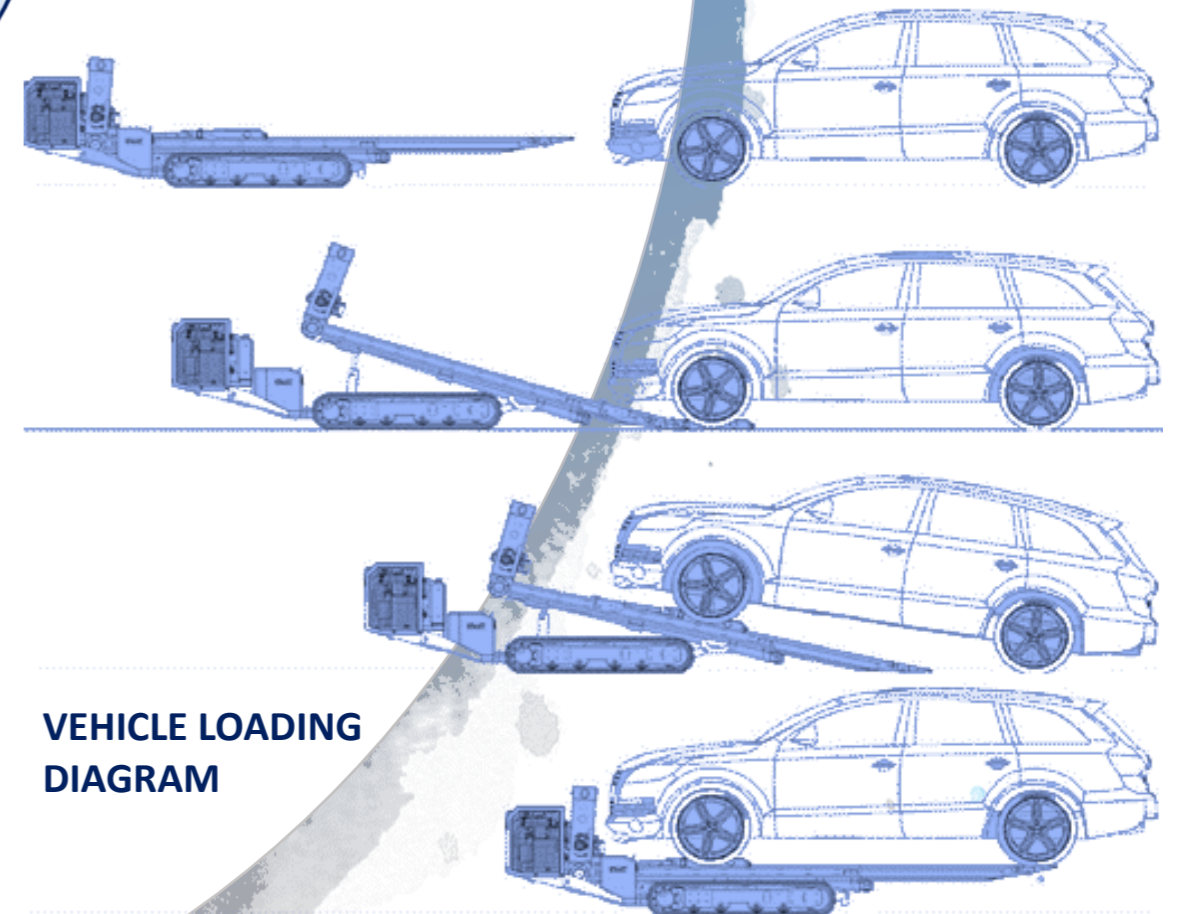
EASTRACT



Track 1800mm
Max. width 3000mm
(of the transported
vehicle)

Max. load 2200Kg
Remote Control
Power (kW-HP)
26.11-35 @ 3600rpm

AUTOMOTIVE



VEHICLE LOADING
DIAGRAM